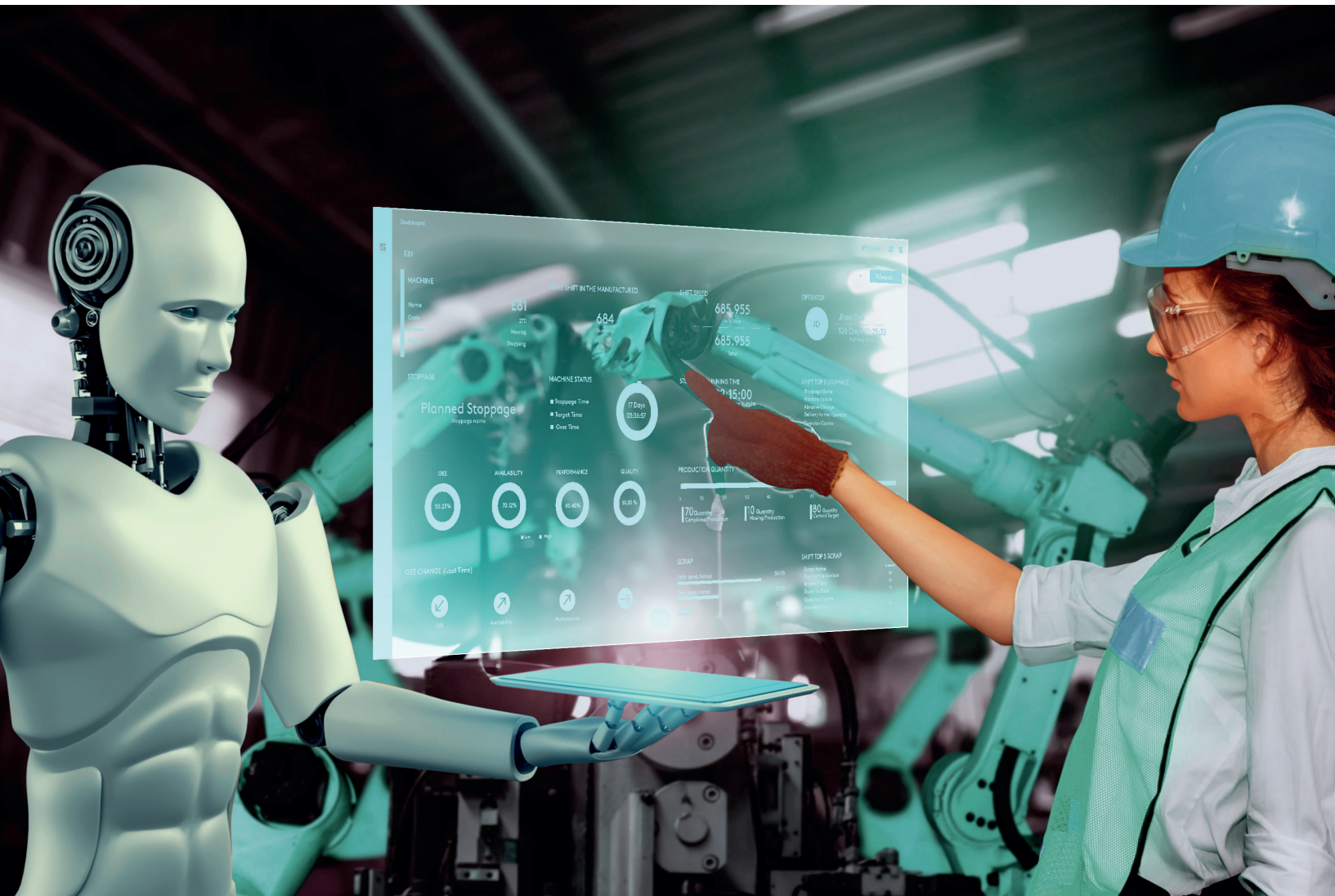


# Drive Success: Transform into a Smart Factory with ProManage Cloud



Double Your Production Speed with the help of  
ProManage Software Robots

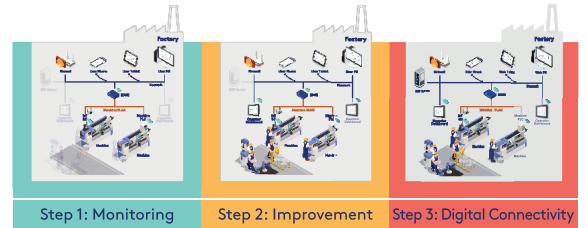


**ProManage**

Auto-improve  
your business.



# Transformation Through a Step by Step Approach to Complete MES/MOM Functionality



## ProManage Cloud Package Functions

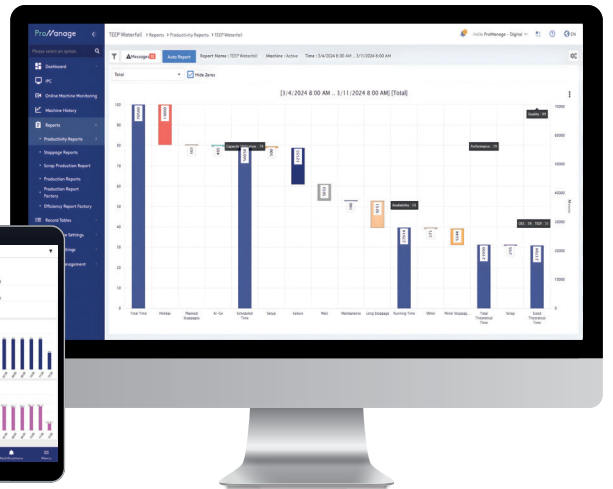
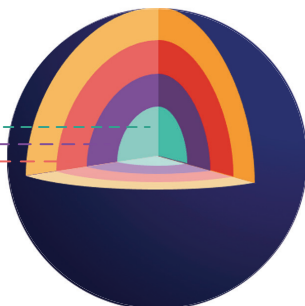
		Mobile	Digital	Integrated
IoT Based Shop Floor	Direct communication with PLC	✓	✓	✓
	IoT device for legacy machines	✓	✓	✓
	Realtime Run/Stop ratio tracking	✓	✓	✓
	Cycle times and production amount tracking	✓	✓	✓
Operator HMI	Real time Dashboards	2 Pcs	3 Pcs	Unlimited
	Mobile application interface	✓	✓	✓
	Real time machine monitoring screens	✓	✓	✓
	Touchscreen operator interface (IPC, IOS, Android ext.)		✓	✓
	Operator and technician entrance/creating a technician call		✓	✓
	Stoppage/Scrap reasons and quantities tracking		✓	✓
	Starting production by defining product and order			✓
	Dashboard design tool			✓
Operation Management	Managing production by machine and groups	✓	✓	✓
	Shift management infrastructure	✓	✓	✓
	Automated periodic report service	✓	✓	✓
	Escalated Warning: Mobile alerts for events (ProGuard I)	✓	✓	✓
	Escalated Warning: Stoppages, scraps, machine alarms (ProGuard II)		✓	✓
	Escalated Warning: System and operation status (ProGuard III)		✓	✓
	Comprehensive MOM functionality: ANSI-ISA95 compliance			✓
	Real time production scheduling			✓
Reports	Managing products, orders, molds and operations			✓
	Accessing collected data records	✓	✓	✓
	Working/stoppage analysis reports	✓	✓	✓
	Stoppage & Scrap root cause analysis reports		✓	✓
Integration	Report generation tools		✓	✓
	Accessing report output in EXCEL format	✓	✓	✓
	No-code platform for easy user customization	✓	✓	✓
	Automatic data transfer to BI tools	✓	✓	✓
	Bidirectional ERP integration			✓

Cloud **Integrated**

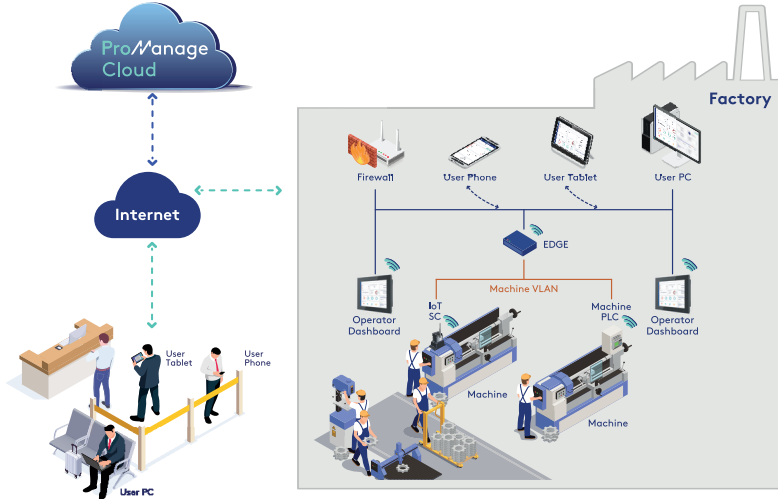
Cloud **Digital**

Cloud **Mobile**

For Details



# How to Get Started?



## Machines Supported by ProManage Cloud

- Plastic Injection
- Extrusion
- Blow Molding
- Mold Shop
- CNC
- Welding
- Cutting
- Bending
- Die Casting
- Press Brakes
- Sandblasting
- Plating
- Deburring
- Heat Treatment
- Paint Shop
- Assembly Lines
- Robots
- Packaging
- Quality Stations
- Textile
- Others

Who We Serve



## Digital Transformation Roadmap Additional Modules

To be "Prescriptive"

### "Reactive"

- Poor traceability
- Poor analysis
- Poor cost management
- Solving problems as they occur
- Breakdown repair
- Fire fighting

### To be "Proactive"

- + **ProManage Cloud**  
Allows businesses to enter the digital world based on their needs, even with limited budgets. It helps identify bottlenecks and losses, making it easier to become smarter and more efficient.
- + **Energy Consumption**  
Electricity, gas, water usage data is recorded and reported.
- + **Quality & Test Management**  
Quality test plans based on product type, SPC analysis are provided to maximize quality ratio
- + **Maintenance Management**  
Planned/preventive maintenance operations, instant repair operations are managed.
- + **Document Management**  
Become a paperless factory by managing documents, presenting them to operators digitally
- + **Product Labeling & Traceability**  
Product or lot based labeling, forward and backward traceability to track each product or lot

### To be "Predictive"

- + **ProData (lot, Sensor Data, SPC Analysis)**  
Machine settings, machine actual values, sensor data, alarms, warnings of machine are collected, monitored and analyzed with SPC.
- + **Predictive Maintenance**  
This module collects machine sensor/process data, processes it with AI algorithms, predicts imminent machine failures and issues alerts.
- + **Predictive Quality**  
This module uses AI algorithms to predict imminent quality issues and creates alerts.
- + **Computer Vision**  
In operations where digital data collection is challenging, production, product type, quantity, duration and quality information is monitored via camera and interpreted by artificial intelligence.

- What should I do?
- When should I do?
- What is the risk if I don't?



